



Central Church of Christ

JANUARY 29, 2012

PLEASE CONTINUE TO PRAY:

Our deepest sympathy to **BRUCE** on the loss of his uncle **Bob Simmons**. Services were Saturday, January 28th. **INETHA COMBEST** is in the local hospital. **DAVID TUCKER** is in Kindred Hospital (formally Triumph) room 201. **DARYL & BECKY TUCKER'S** son **Ches** had surgery on his Achilles tendon. He is home and recovering well. Health concerns for **TONY OLIVAREZ**. **JIM OBER** had surgery on his gallbladder Tuesday, January 24th. He is home and recovering. **GIGI BARLOW** is having some health issues due to a wreck.



Also keep these people in your hearts and prayers:

Clayton Williams, Paul Cox, Evelyn McCrary, John Brookins, T.A. & Gene Hayhurst, Jay Weddel, David Tucker, Linda Hayhurst, Mabel Sadler, Jimmie Scott, David George, Lena Powell, Frances Lemoine, Darla Young and Jennifer Berkheart (Ross James' niece)

YOUTH SUNDAY

Next Sunday, February 5th is our YOUTH SUNDAY. There will be a special collection on this day, so please be praying about how you can help with our youth program.

Records for 1/22/2012

Bible Class: 77

Worship: 96

Contribution: \$6,333

Budgeted Contribution: \$3,560

Morning Service

Singing-Toby

Song

Song

Song

REFLECTION & LORD'S SUPPER WEEKLY CONTRIBUTION

Song

Song

Prayer

Song

~BRUCE~

Song

Announcements

Bob Colson

**February 11th is the
all congregational
Valentine Banquet.
Served by the Youth.
There is a sign-up
sheet on the Activity
Table.**



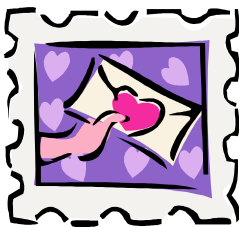
30th-Nicole Aguilera
4th-Evelyn McCrary
Justin Brown

*Dear Church Family,
Thank you for the ivy sent to Mother's funeral.
We appreciate each expression of sympathy -
all the cards, calls, visits and prayers. We have
felt your love and been comforted.*

If anyone would like to take some time and have prayer with our Elders, please contact one of them and take advantage of this opportunity.

The Trojan Horse is a tale from the Trojan War about the stratagem that allowed the Greeks finally to enter the city of Troy and end the conflict. In the canonical version, after a fruitless 10-year siege, the Greeks constructed a huge wooden horse, and hid a select force of men inside. The Greeks pretended to sail away, and the Trojans pulled the horse into their city as a victory trophy. That night the Greek force crept out of the horse and opened the gates for the rest of the Greek army which had sailed back under cover of night. The Greeks entered and destroyed the city of Troy, decisively ending the war. Many people have battled strongly against Satan in their lives, families and congregations through the power of Christ and have won those battles. However, the same people who have won spiritual battles can still be defeated by spiritual Trojan Horses. Seeds of Satan, no matter how attractive (unattractive), appealing (unappealing), popular (unpopular) are damaging and destructive when they sprout and grow. Not all of Satan's seeds are visible to an innocent onlooker. We have to do a better job at seeing and recognizing those seeds in ourselves and others before damage is done. As we know, Satan's minions can masquerade as light and Satan has the ability to blind and deceive the hearts of those who hear the word. Listen to the Word for yourself and for others as we seek to reveal Christ in us and to others.

*See ya at the Gathering Place,
Bruce*



Wednesday Night Ladies Class

Valentines Day is nearly here and we have a list of the college students and AIM students on the Activity Table if you would like to participate. Please have your candy or cards here by Wednesday, February 8th.

MONTHLY REMINDERS:

Mission Contributions
 1st-Family Night @ 6:00 pm
 5th-Potluck Luncheon & early assembly
 11th-Men's Breakfast @ 7:00am
 12th-Men's Business Meeting following evening assembly.
 19th-Potluck Luncheon & early assembly
 26th-Jr. High devotional this evening, after assembly at Randy & Laura Scott's Home.

SUPER BOWL PARTY
 You are invited to a Super Bowl Party at
BRUCE & AMANDA'S home
 on February 5th.
 Please bring a drink, dish and enjoy the fellowship. There will be a sign-up sheet for attendance on the Activity Table.